

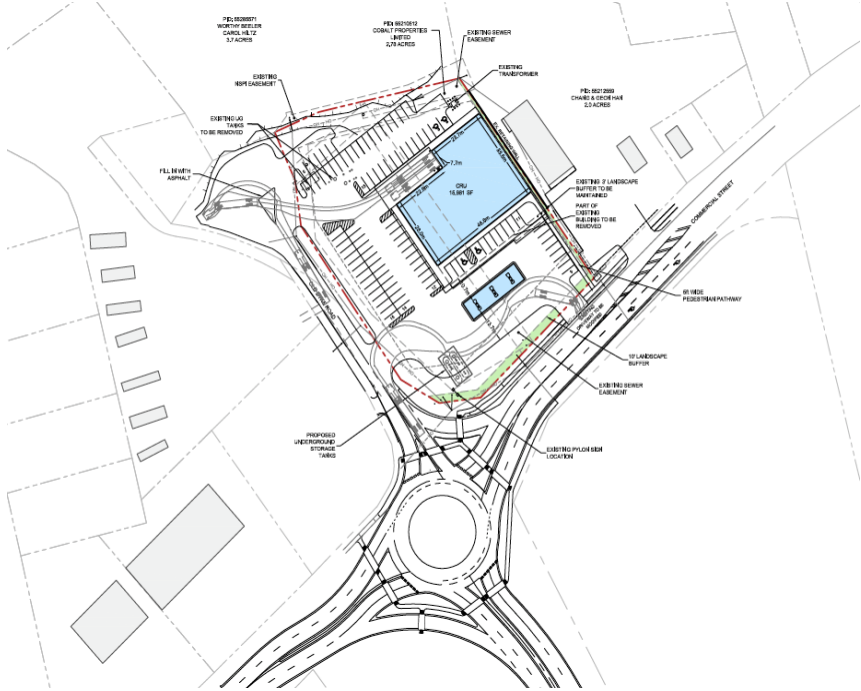
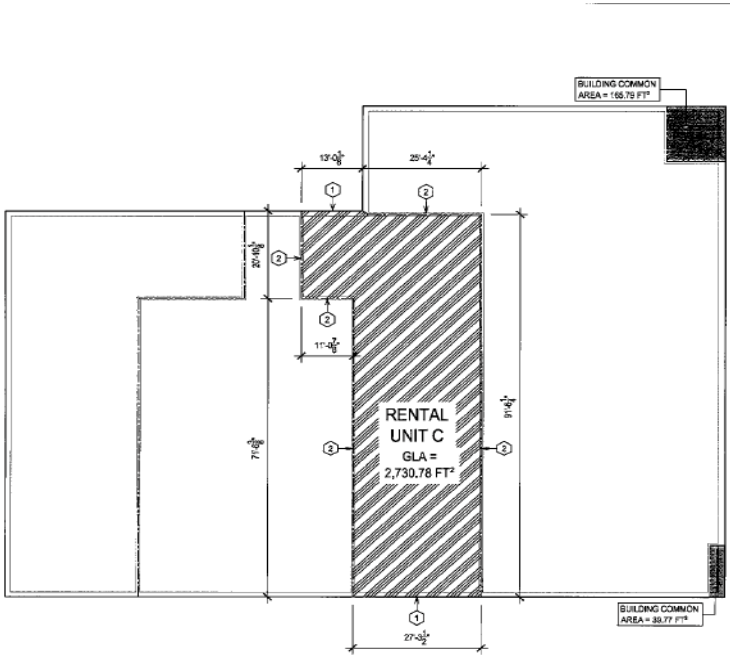


PRESENTS FOR LEASE

9319 COMMERCIAL STREET, NEW MINAS



- Ideally suited for commercial services, professional services or retail storefront business
- Great exposure on high-traffic corridor of busy Commercial Street
- Ample paved parking on-site
- Square Footage Available: 2,730.78 sq. ft.



For Information Contact:

J.M. (Jim) Chambers
Chambers Developments Inc.
161 Main Street
Wolfville, NS B4P 1C2
T 902-542-1400
F 902-542-1088
jim@chambersdevelopments.com