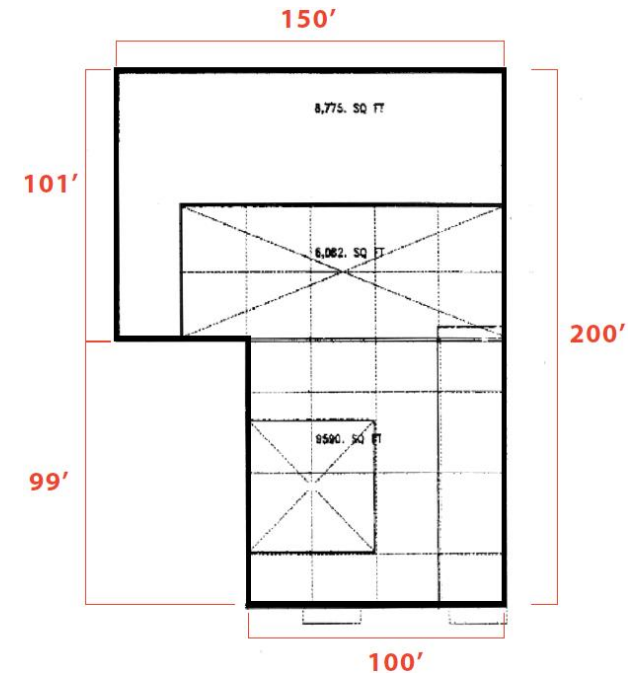




**Presents:**  
**Building for Lease, 25,000 s.f.**



**Commercial St.,  
New Minas, Nova Scotia**

Two levels, 25,000 sq. ft.

**For Information, Contact:**

J.M. (Jim) Chambers  
Chambers Developments Inc.  
161 Main Street  
Wolfville, NS B4P 1C2  
T 902-542-1400  
F 902-542-1088  
jim@chambersdevelopments.com