



**Presents:**

# **KINGSWAY COURT, Lr. Sackville, Nova Scotia**

**For Information, Contact:**

J.M. (Jim) Chambers  
Chambers Developments Inc.  
161 Main Street  
Wolfville, NS B4P 1C2  
T 902-542-1400  
F 902-542-1088  
[jim@chambersdevelopments.com](mailto:jim@chambersdevelopments.com)



# Kingsway Court

## OVERVIEW

---

### The Centre

This centre is well presented on the “Highway #1”<sup>1</sup> retail strip in one of Nova Scotia’s fastest growing residential markets. The immediate area has over 60,000 people with most commercial categorized as service retail. Service retail does well throughout the “strip “.

### Address

601 Highway #1,  
Lr. Sackville, Nova Scotia

### Gross Leasable Area

**TOTAL SF** 14,759

### Site Size

Acres

### Financials

Year (2010 – 2011) NOI \$222,000 pa +

(All Tenants are under fully executed, net Leases)

---

### Key Tenants

Money Mart  
Medicine Shop  
LA Nails  
TopCuts  
Kingsway Dental  
Family Music



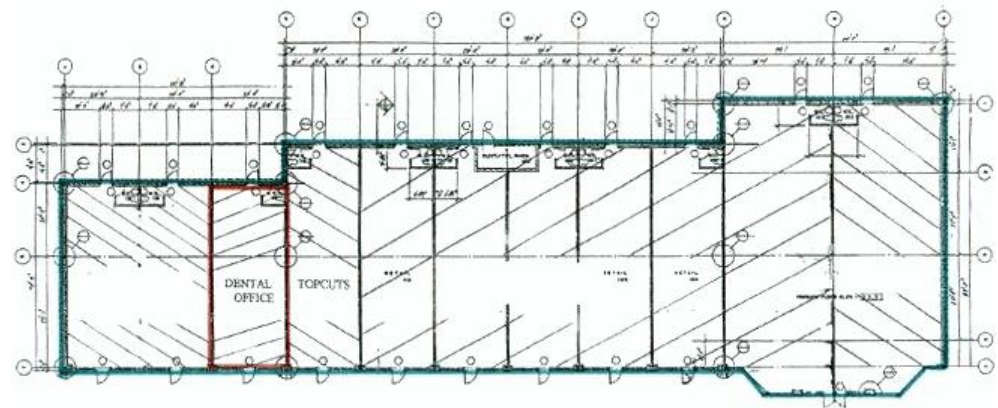
## Site Details

**Site Size:** Approximately \_\_\_\_\_ Acres

**Access:** 2 Entrance/Egress

**Parking:** 70 Spaces + Employee

**Zoning:** Commercial – Shopping Centre (3C - Zone)



If any information relating to the Property, including the information provided in this OM, is provided at any time, orally or otherwise, by the Vendor or CDI or anyone acting on their behalf, such information is provided as a convenience only without representation or warranty as to its accuracy or completeness and such information should not be relied upon by prospective purchasers without independent investigation and verification.

